

Introducing A New Way To Think About Architectural Preset Stations...

SceneStation sets a new standard for full-featured, easy to use, cost-effective DMX playback. Perfect for restaurants, churches, high-end residential, trade show booths and more, SceneStation can control nearly any DMX device (RGB fixtures, moving lights, dimmers, effects, etc.), while also remaining very simple for the end-user.

“Why do Preset Stations only output static scenes?”

SceneStation is dynamic. Instead of only offering the ability to play back a few simple “presets”, SceneStation can be programmed to run shows using up to 64 steps.

The secret is the power and flexibility of the five fully-customizable buttons. SceneStation goes way beyond simple “presets” with the ability for each button to be programmed with advanced features like running chases, stepping sequentially through a list of scenes, toggle and momentary functions and more. Additionally, each button includes fully-programmable RGB backlighting and the button caps can be optionally engraved with custom legends.



SS-105, SS-205
SceneStation (white)



SS-110, SS-210
Portable SceneStation

Another important feature of SceneStation is how easy it is to program. SceneStation can be programmed by either the SceneStation Studio Software or by an easy to use Programmer's IR Remote.

SceneStation can control virtually any device that operates from a standard DMX signal. SceneStation's DMX port is bi-directional, allowing SceneStation to control DMX fixtures or to record a DMX scene that was created by another controller. SceneStation can even be used as a console backup, as it can automatically begin outputting its current look if it detects that the other controller is no longer outputting its DMX signal.



SS-IR33
SceneStation Programmer's Remote

Features At A Glance:

- Completely Self-Contained
- SceneStation Studio software for Station Management, Programming and Operation
- IR Remote for Programming and Operation
- 64 Scene Capacity
- Static, Sequential, Toggle & Chase Modes On Each Button
- Programmable RGB Buttons
- 2.4GHz Wireless Link Option
- Multiple Master/Slave Stations via Wireless Network
- DMX-512 Output
- DMX Input Snapshot and/or Manual Channel Editing
- Automatic “Power-On” Preset Activation
- Automatic Console Backup
- 12-24V AC or DC Operation
- Decora® Wall Station Compatible
- Optional Button Engraving
- Optional Portable Enclosure
- Available in White, Black, Ivory and Almond

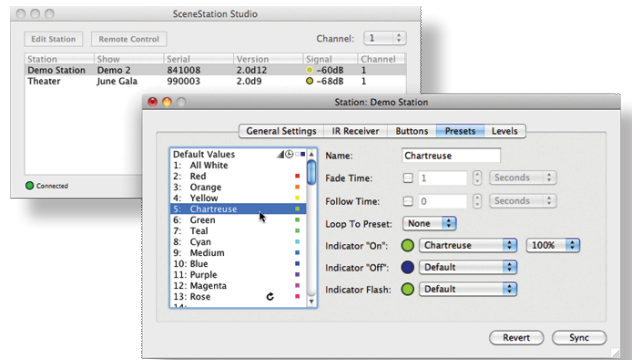
Continued on next page...

Another important feature of SceneStation is how easy it is to program. SceneStation can be programmed by either the SceneStation Studio Software or by an easy to use Programmer's IR Remote.

SceneStation can control virtually any device that operates from a standard DMX signal. SceneStation's DMX port is bi-directional, allowing SceneStation to control DMX fixtures or to record a DMX scene that was created by another controller. SceneStation can even be used as a console backup, as it can automatically begin outputting its current look if it detects that the other controller is no longer outputting its DMX signal.

A new 2.4GHz wireless "StationLink" option for SceneStation is also available that allows stations to establish a link between each other for using multiple stations in a single project, and for connecting to the new SceneStation Studio software for easy programming and station management.

The new SceneStation Studio software (available for both Windows and Mac OS X) allows one or more wireless stations to be easily managed and programmed via an intuitive desktop application.



SS-215
Portable Wireless SceneStation Kit

Attach the SceneStation USB Adaptor to your Mac or PC to wirelessly manage, program and control a network of SceneStations. Easily change scenes, change timing, create sequences, adjust button colors and much more. SceneStation Studio also works as an offline editor for building station configurations even without having access to a station. SceneStation Studio is a free download available from www.interactive-online.com.

SceneStation can also be programmed using the Programmer's IR Remote. The remote can activate presets, record or edit scenes, adjust preset properties, program buttons and more. No computer is needed when using with the Programmer's Remote. All preset settings can be changed using this simple option.

SceneStation is also available in a new Portable configuration that is great for using all of SceneStation's features "on-the-go". Perfect for rental jobs or just for using in portable applications, the Portable SceneStation is enclosed in a rugged metal box with a recessed area for the buttons and IR receiver, and an end-panel that provides convenient access to two 5-pin XLR jacks and the unit's power inlet.

A "Portable Kit" is also available (pictured on the left) that includes the Portable SceneStation and a variety of handy accessories, all packaged in a hard storage case.

Contractor friendly, user friendly, budget friendly and decor friendly. SceneStation was designed to be a DMX controller that fits beautifully into nearly any project.

SceneStation is the professional choice for stand-alone architectural playback and control.